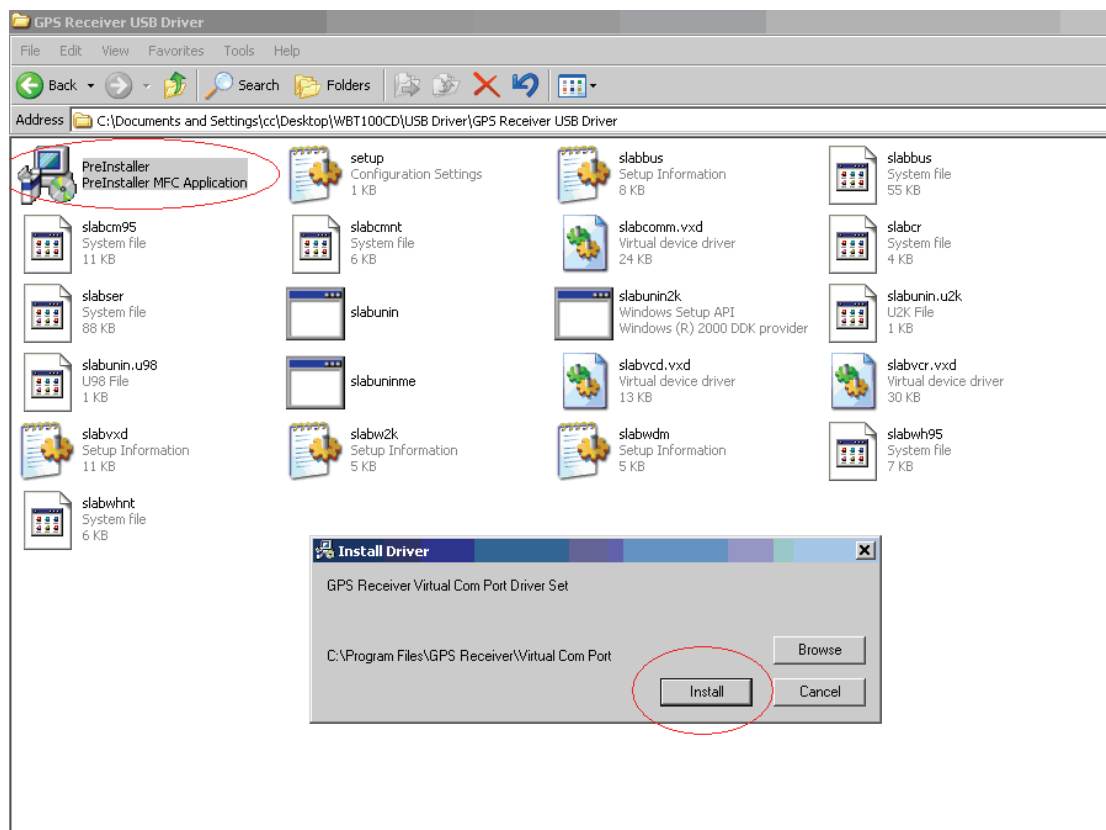


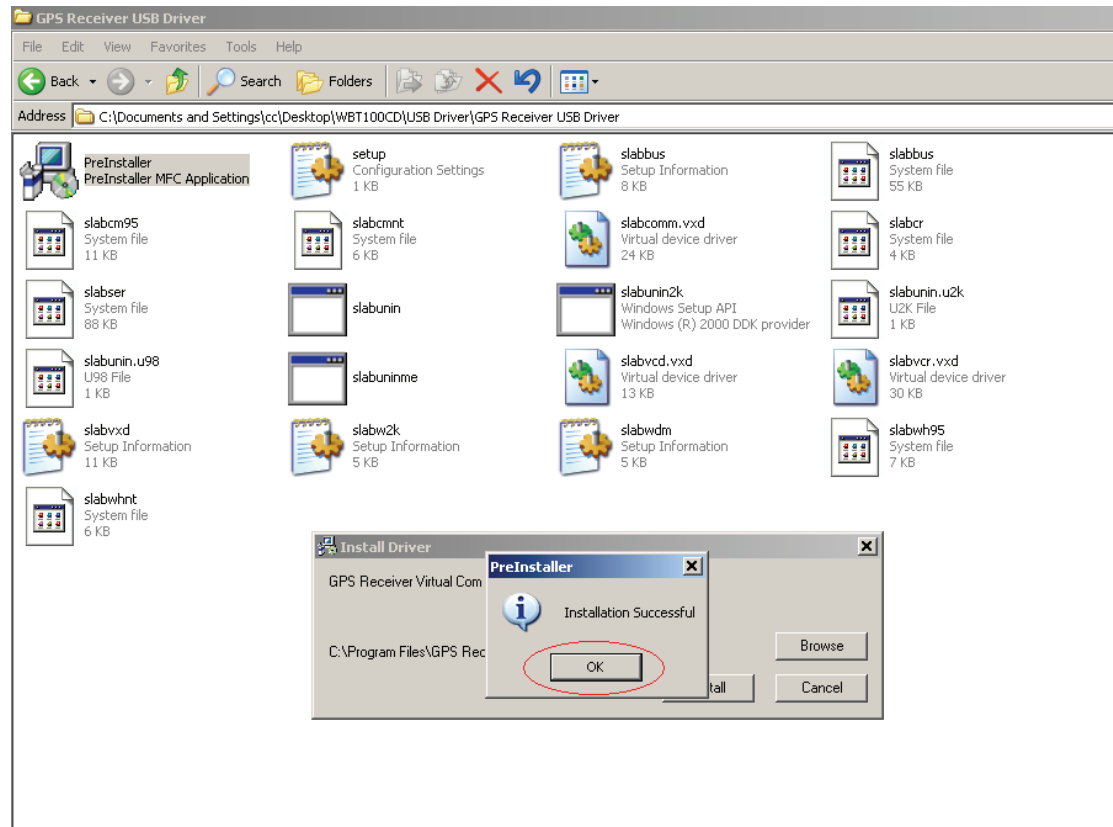
USB-CP2102 Installation Guide

1. How to Install :

2. Go to (\ USB Driver\GPS Receiver USB Driver\PreInstall.exe), and Choose “Install”



3. At the end of installation

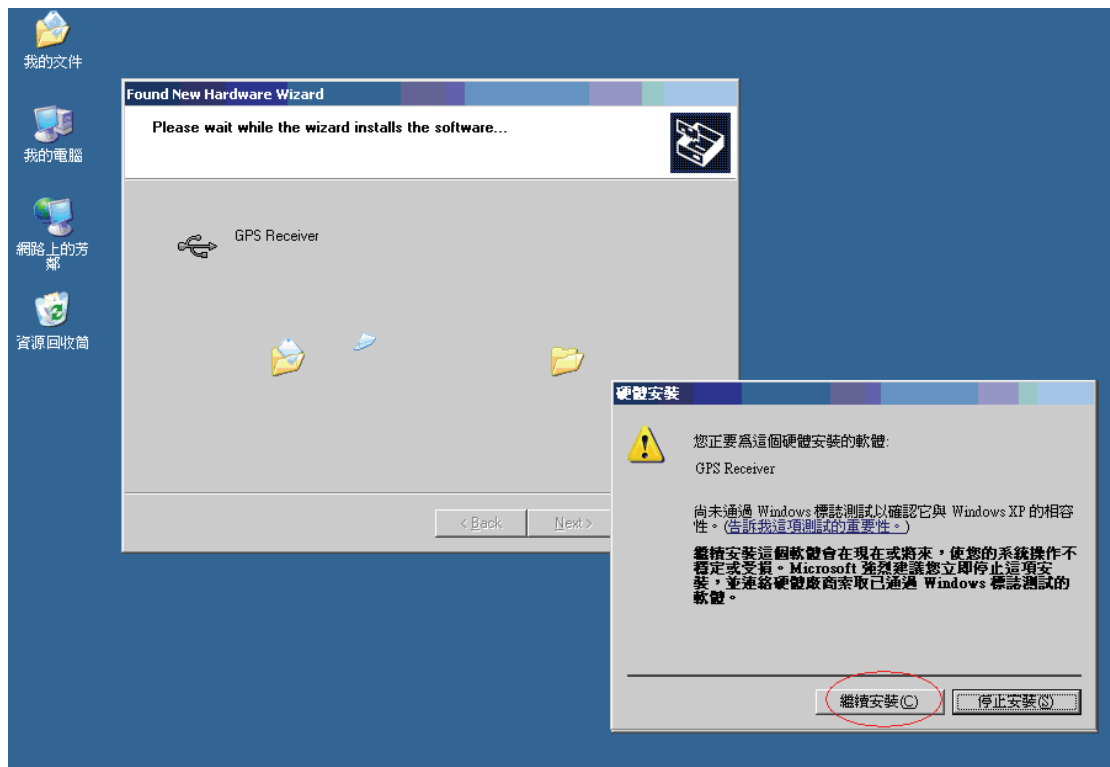


4. Then, connect the USB connector head to the USB port on computer. When computer detects it, it will ask for driver software.

5. After connection of USB device, computer screen will display as below asking to add new hardware



6. If the following screen pops up, choose “ next”

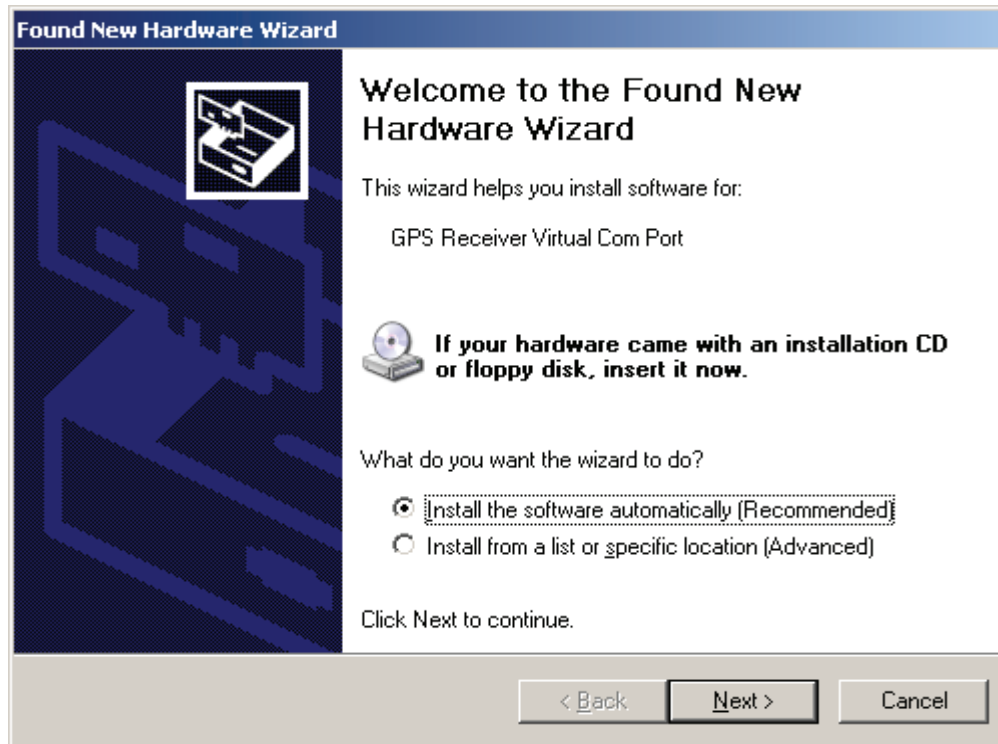


7. USB installation is completed

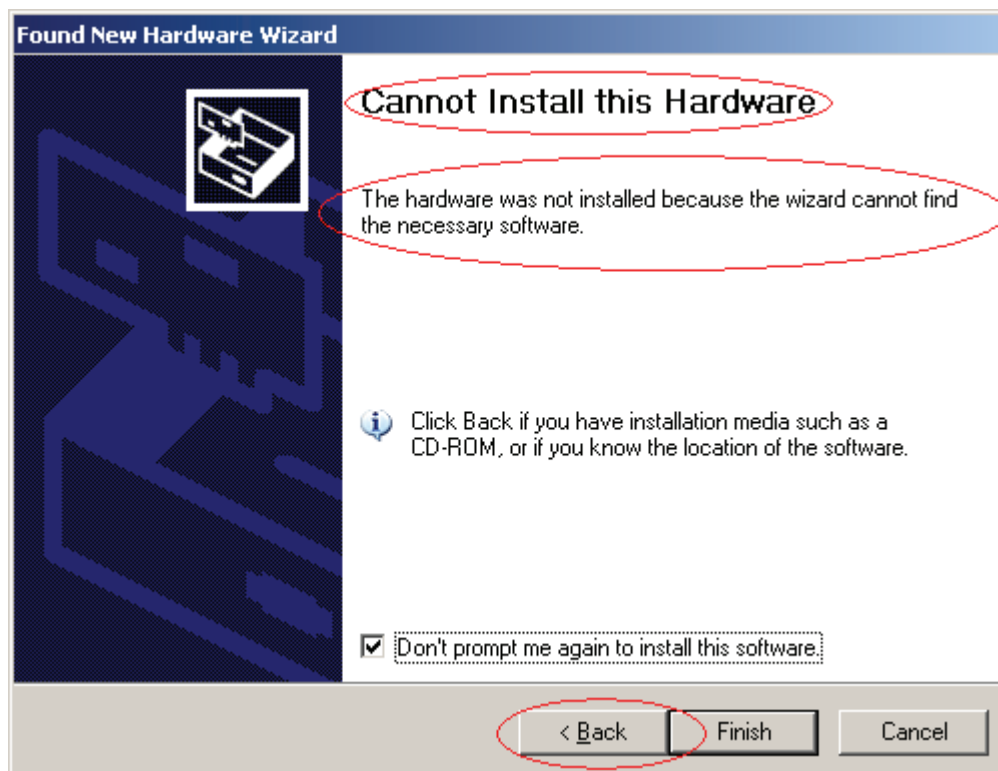


8. At the end of USB installation, computer will request to install USB to UART

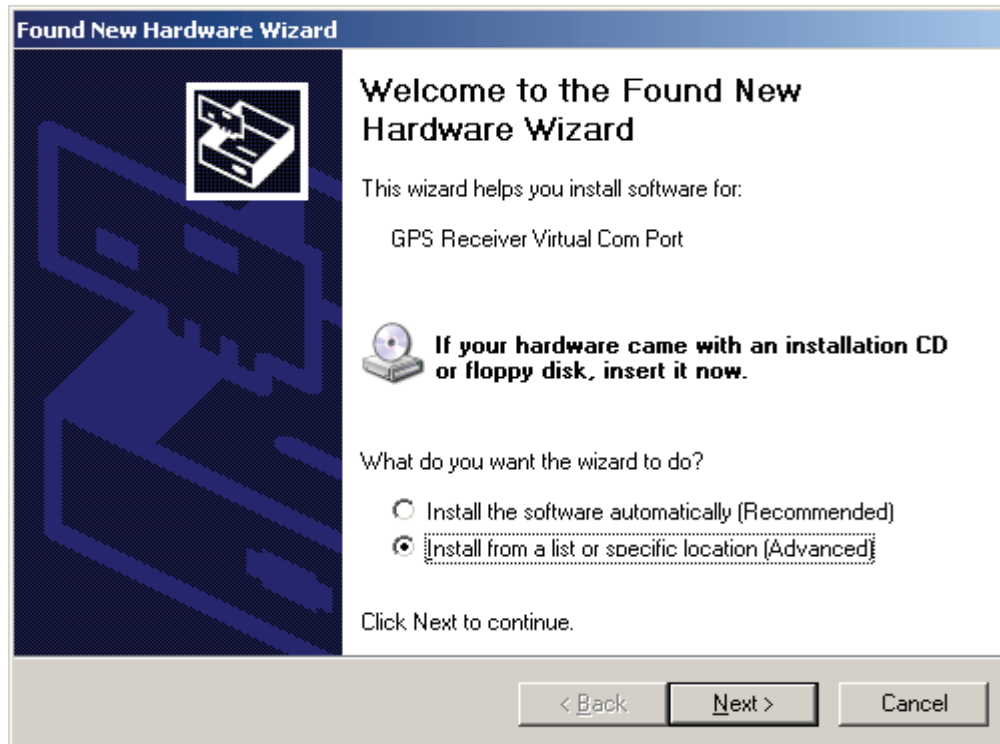
Bridge Controller, proceed as below.



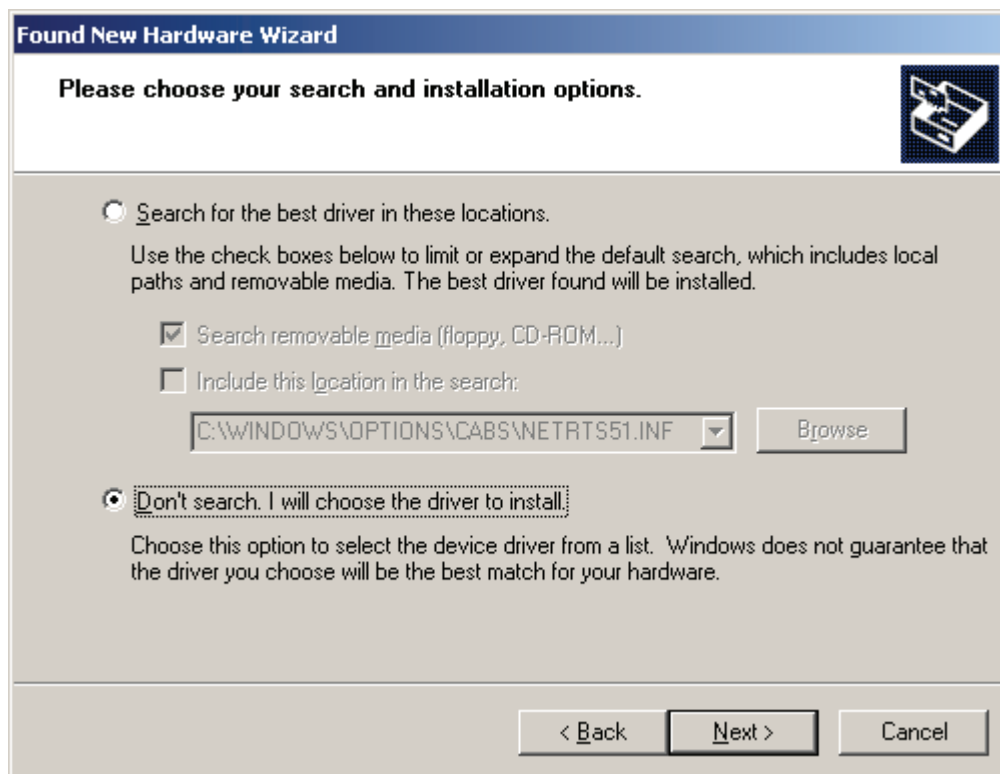
9. If computer cannot detect or find out execution software, it will display like this. Go back to the previous screen and install it by manual method.



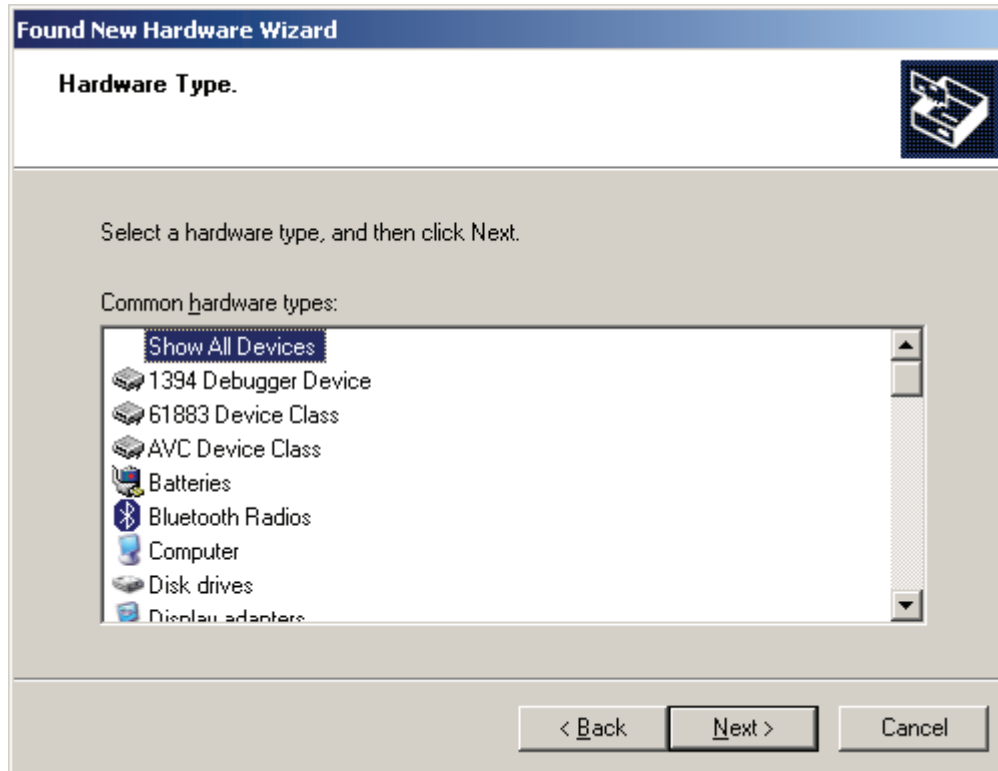
10. Select **Install from a list or specific location** and choose next



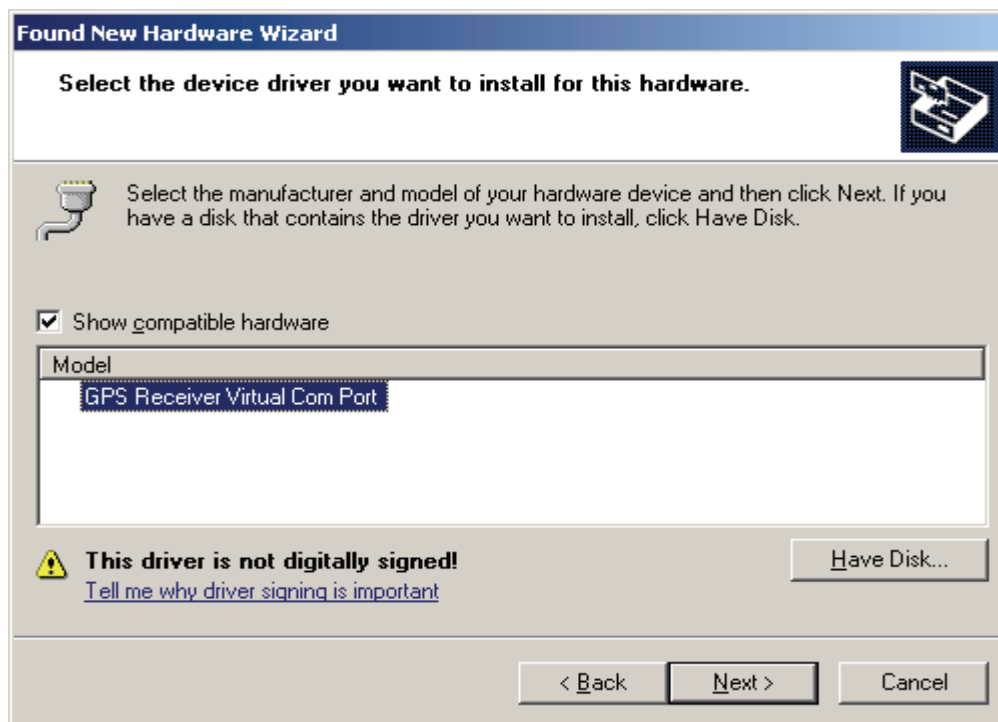
11. Select **Don't search. I will choose the driver to install.** and choose next



12. Select **Show All Device** and choose next



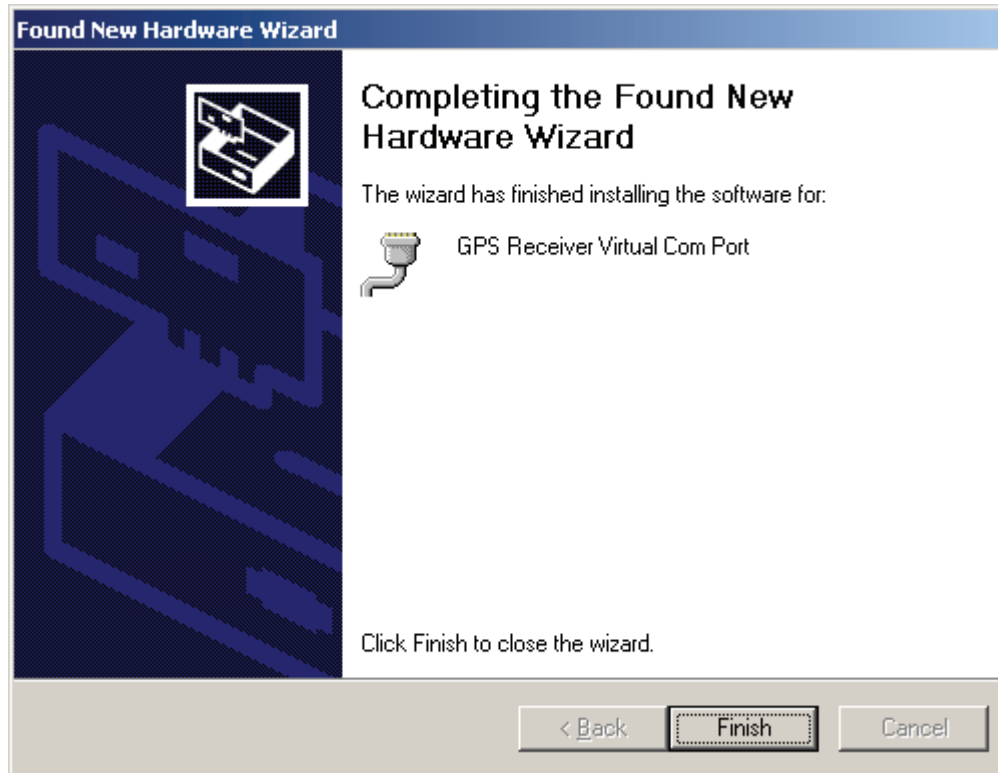
13. Select **Show compatible hardware** and then decide **GPS Receiver Virtual Com Port**. Then choose next



14. If PC display screen as below, choose next



15. At the end of installation, Proceed below for the creation of Virtual Com Port on the computer by software means. In other words, the USB signal is transformed into UART signal.



16. To verify if the installation is done properly, go to Device Manager and check the status

a. If the circled text can be seen as in illustration as below, it is assured that USB

installation on PC is done properly.

b. The circled part in illustration below confirms that USB is transformed by software into Com Port. The Com port corresponds to COM4. If the USB device is inserted into computer's USB port, the COM4 will act as interface for inter-communication purpose.

